



<b>Engine</b>	Weichai WD10G178E25
<b>Gross Power</b>	131 kW (176 hp / 178 ps) @ 1,850 rpm
<b>Net Power</b>	120 kW (161 hp / 163 ps) @ 1,850 rpm
<b>Maximum Torque</b>	830 N · m
<b>Blade Capacity</b>	4.5 m <sup>3</sup>
<b>Operating Weight</b>	17,000 kg

# **B160C BULLDOZER**

# B160C SPECIFICATIONS >>>

## ENGINE

Emission Regulation	Tier 2 / Stage II
Make	Weichai
Model	WD10G178E25
Gross Power	131 kW (176 hp / 178 ps) @ 1,850 rpm
Net Power	120 kW (161 hp / 163 ps) @ 1,850 rpm
Maximum Torque	830 N · m
Number of Cylinders	6
Aspiration	Turbocharged
Displacement	9.726 L

## TRANSMISSION

Transmission Type	Power shift
Maximum Travel Speed, fwd	9.72 km/h
Maximum Travel Speed, rev	12.64 km/h
Number of Speeds, fwd	3
Number of Speeds, rev	3

## ELECTRICAL SYSTEM

System Voltage	24 V
----------------	------

## UNDERCARRIAGE

Shoe Width	510 mm
Number of Shoes per Side	37
Number of Upper Rollers per Side	2
Number of Bottom Rollers per Side	6
Shoe Ground Pressure	67 kPa
Ground Clearance	400 mm

## OPERATING WEIGHT

Operating Weight	17,000 kg
------------------	-----------

## BLADE PERFORMANCE

Blade Type (referenced)	Straight
Blade Capacity (referenced)	4.5 m³
Blade Depth below Ground	540 mm
Blade Lift above Ground	1,076 mm
Blade Tilt (left)	470 mm
Blade Tilt (right)	470 mm

## HYDRAULIC SYSTEM

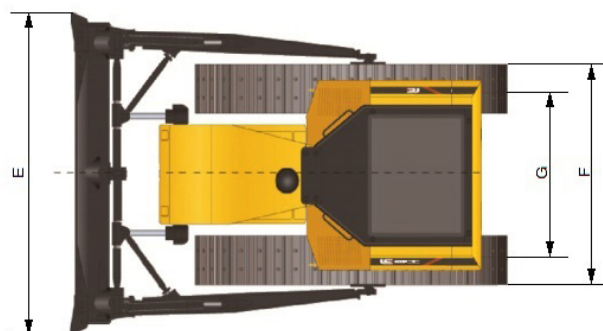
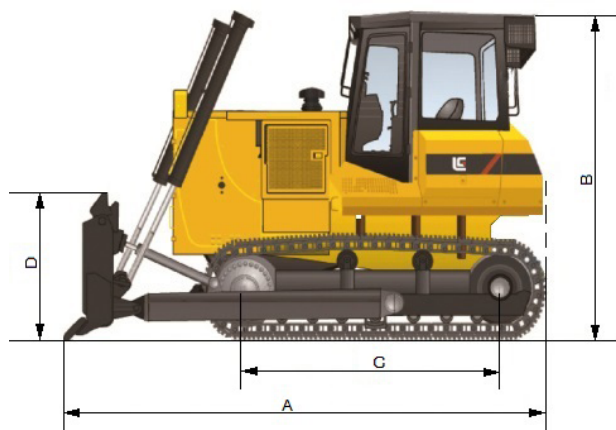
Flow	250 L/min
Pressure	14 MPa
Pump	Gear pump
Cylinders	Dual-acting piston type

## SERVICE CAPACITIES

Fuel Tank	350 L
Engine Oil	24 L
Cooling System	62 L
Hydraulic System Total	108 L
Transmission and Torque Converter	122 L
Final Drives	66 L

## DIMENSIONS

A Overall Length	5,180 mm
B Height to Top of Cab	3,200 mm
C Track Length on Ground	2,430 mm
D Blade Height	1,130 mm
E Blade Width	3,420 mm
F Width over Track	2,390 mm
G Track Gauge	1,880 mm



### Guangxi Liugong Machinery Co., Ltd.

No. 1 Liutai Road, Liuzhou, Guangxi 545007, PR China  
T: +86 772 3886124 E: overseas@liugong.com  
www.liugong.com

Specifications and designs are subject to change without notice. Machines shown may include optional equipment. Liugong standard and optional equipment may vary from region to region. Please consult your Liugong dealer for information specific to your area. Engine power kW is converted to horsepower (1 kW=1.3596 ps and 1 kW=1.3410 hp) in this file.

09/2023 Designed by LiuGong  
Replace the previous versions of 03/2023