



<b>Engine</b>	Cummins QSK19
<b>Max Gross Power</b>	419 kW (562 hp / 570 ps) @ 1,600 rpm
<b>Max Net Power</b>	398 kW (534 hp / 541 ps) @ 1,600 rpm
<b>Operating Weight</b>	52,100 kg
<b>Standard Bucket Size</b>	7.0 m <sup>3</sup>
<b>Standard Breakout Force</b>	432 kN
<b>Standard Dump Clearance</b>	4,094 mm

# 8128H WHEEL LOADER

TOUGH WORLD. TOUGH EQUIPMENT.



# 8128H SPECIFICATIONS >>>

## ENGINE

Emission Regulation	Tier 3 / Stage IIIA
Make	Cummins
Model	QSK19
Max Gross Power	419 kW (562 hp / 570 ps) @ 1,600 rpm
Max Net Power	398 kW (534 hp / 541 ps) @ 1,600 rpm
Peak Torque	2,644 N · m @ 1,500 rpm
Displacement	19 L
Number of Cylinders	6
Aspiration	Turbocharged & Air-to-air intercooled

## TRANSMISSION

Transmission Type	Countershaft, power shift
Torque Converter	Single stage, three elements
Maximum Travel Speed, fwd	36 km/h
Maximum Travel Speed, rev	36 km/h
Number of Speeds, fwd	4
Number of Speeds, rev	4

## AXLES

Differential Front Type	Limited slip
Differential Rear Type	Conventional
Axle Oscillation	± 12°

## STEERING

Steering Configuration	Articulated
Steering Relief Pressure	21 MPa

## BRAKES

Service Brake Type	Wet discs brake
Service Brake Actuation	Hydraulic
Parking Brake Type	Caliper discs brake
Parking Brake Actuation	Hydraulic

## HYDRAULIC SYSTEM

Main Pump Type	Piston
Main Relief Pressure	26 MPa
Raise	8.5 s
Dump Time	2.1 s
Float Down Time	4.0 s
Fastest Total Cycle Time	14.6 s

## LOADER ARM PERFORMANCE with Standard Bucket 7.0 m³

Tipping Load - Straight (ISO 14397-1:2007)	38,700 kg
Tipping Load - Full Turn (ISO 14397-1:2007)	31,200 kg
Bucket Breakout Force	432 kN
A Maximum Hinge Pin Height	5,649 mm
B Dump Clearance at Full Height Discharge	4,094 mm
C Dump Reach at Full Height Discharge	1,861 mm
D Maximum Digging Depth, Bucket Level	137 mm
S <sub>1</sub> Bucket Rollback at Ground Level	43°
S <sub>2</sub> Bucket Rollback at Carry	49°
S <sub>3</sub> Bucket Rollback at Maximum Height	56°
S <sub>4</sub> Maximum Dump Angle at Full Height	45°

## BUCKET PERFORMANCE

Reference Bucket	6.0-12.0 m³
------------------	-------------

## DIMENSIONS

E Ground Clearance	480 mm
G Wheelbase	4,550 mm
H Cab Height	4,195 mm
J Wheel Tread	2,700 mm
K Width Over Tires	3,590 mm
L Length with Bucket Down	11,847 mm
M Turn Angle, Either Side	43°
P Rear Angle of Departure	25°
R <sub>1</sub> Turning Radius, Bucket Carry	8,530 mm
R <sub>2</sub> Turning Radius, Outside of Tire	7,620 mm
W Width Over Bucket	3,810 mm

## TIRES

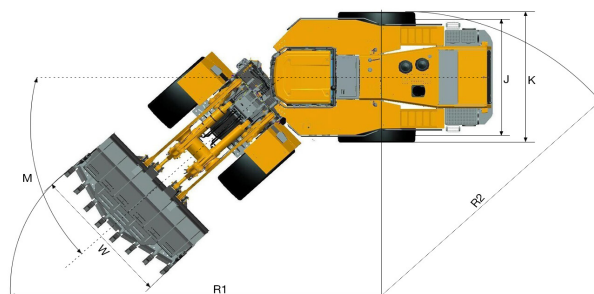
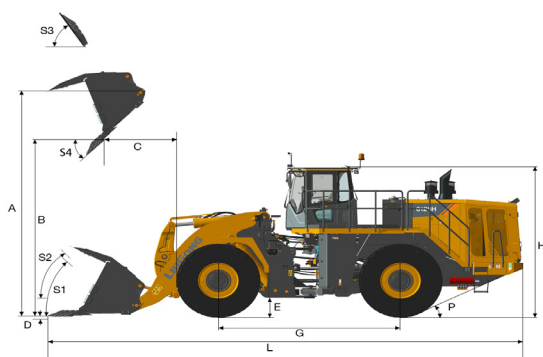
Tire Size	35/65 R33
-----------	-----------

## OPERATING WEIGHTS

Operating Weight	52,100 kg
------------------	-----------

## SERVICE CAPACITY

Fuel Tank	667 L
Engine Oil	60 L
Cooling System	95 L
Hydraulic Reservoir	420 L
Transmission and Torque Converter	140 L
Axles, each	115 L



Guangxi Liugong Machinery Co., Ltd.

No. 1 Liutai Road, Liuzhou, Guangxi 545007, PR China  
T: +86 772 3886124 E: overseas@liugong.com  
www.liugong.com

Specifications and designs are subject to change without notice. Machines shown may include optional equipment. Liugong standard and optional equipment may vary from region to region. Please consult your Liugong dealer for information specific to your area. Engine power kW is converted to horsepower (1 kW=1.3596 ps and 1 kW=1.3410 hp) in this file.

07/2021 Designed by LiuGong  
Replace the previous versions of 06/2019